



Cabarrus Quilters' Guild Newsletter

June 2012

From the President's Desk:

Summer is here. The races are over again until October. While the races pour thousands of dollars into our economy it is nice to have our community back to normal. Stop and think how many ways the races affect your life. If you are a race fan you get together with your friends to watch the race on TV or join the throngs at the track. To say the least the traffic affects everyone and shopping at Concord Mills is almost as bad as Christmas time. I guess we should be grateful we have the race track to bring a boost to our economy.

While getting ready for the race I discovered termites had invaded my house. I have had the little buggers exterminated but now I'm faced with repairing their damage. This forced me into the garage. I know my husband had tools but now that I'm looking for a particular tool I'm finding multiple drills, saws, and the little gadgets that go with the tools. Don't ever let your husband tell you your collection of quilting notions have to stop. Tell me just how many corded and cordless drills can one person use? My son just laughed & said "Momma, we just need all those tools". OK but now I won't ever feel bad about my sewing machines & quilting tools. I know what I have & how to use them! Guess my next endeavor is to invade the mancave & learn to use those tools. Yea?

Happy Quilting

Carol

Meeting Information:

PLEASE NOTE THE MEETING TIME HAS BEEN CHANGED.

The Cabarrus Quilters' Guild meets at **6:30 p.m.** on the second Monday of each month in the fellowship hall at:

**Forest Hill United Methodist Church
265 Union St. N.
Concord, NC
VISITORS WELCOME!**

Guild Officers:

President – Carol Harris
Vice President – Barbara Orr
Secretary – Joyce Furr
Treasurer – Marsha Haney

June Birthdays

6-4 Mildred Lamb
6-8 Carol Diaz
6-11 Cindy Palazzeo
6-22 JoAnna Cupp
6-13 Marsha Haney
6-23 Rebecca Verrierr-Watt



Program Notes:

June 11 th, meeting Lecture by Pete Wade
Topic: Maintaining your Sewing Machine,
serger, embroidery etc. for optimum
performance.

September 10th, meeting, lecture by Susan
Edmonson Sewing/quilting/craft Instructor

Lecture: on Needles and Threads

May 2012 Minutes

Newsletter Information:

Every paid member will receive the newsletter in an e-mail early in the month. If you wish to have your newsletter mailed, there will be a small \$10.00 charge to help defray the cost of paper and postage. It will also be available on the guild website for everyone.

Visit our Newsletter Online:

www.cabarrusquiltersguild.org

There is no longer a password needed to access the newsletter online. No personal information will be available in this copy of the newsletter.

Refreshments and Greeters:

Tom Richardson
Tarich43@gmail.com

Greeters:

Responsibilities include:
Be early to the meeting, speak to visitors
during the break and make them feel
welcome.

Sign up for Refreshments and Greeting:

As you plan which months you will help with refreshments and greeting, we ask that you do not sign up for both volunteer jobs in the same month. The signup sheets will be available at each meeting for you to sign up until full.

June Greeters: Linda Brimanson

June Refreshments:

Debbie Seatz
Ruth Garrett
Mildred Lanb
Mattie Johnson
Melba Mick

2012 Membership Dues:

Tom Richardson – tarich43@gmail.com

Cabarrus Quilters' Guild Membership Dues are \$30 per year. If you are joining for the first time, the dues are \$35 to cover the cost of your badge.

2012 Guild Retreats

Wed, June 20 thru Sun June 24 (checkout Noon)

Space is still available for the June retreat. Tabor Retreat is located in Lynchburg, VA. Both private and semi-private rooms are available. Our planning meeting will be Monday, June 11th at 5:30 pm at Hancock's Fabrics in the Cloverleaf Plaza in Kannapolis. Full payment will be due at the planning meeting. Please contact Lisa Edwards for questions.

Please mark your calendars and plan your vacations for a wonderful quilting time.

Deposits are being accepted for the October retreat.

Sew Tuesdays:

Mildred Lamb – quiltnut3@windstream.net

Do you need help with a technique or a project? Mildred is the best. Sew Tuesdays are held the first and third Tuesdays of every month from 9 a.m. until 11 a.m. at the Concord Senior Center. Contact Mildred Lamb at the above address, or call her at 704-933-9603 to let her know you are planning to attend.

We plan to add community projects to do either on Sew Tuesdays or Saturday sewing sessions. We will talk about this in the meeting.

Guild Library:

Marsha Haney – itsmarsha@ctc.net

If you see any books that you would like to “check out” on the web site library list, send an e-mail to Marsha to bring the book to the next meeting and you may check them out.

Sew Saturday Class

June Sew Saturday we have Janice Brewington leading us in free motion quilting. Material & equipment list can be picked up at the guild meeting.

We will start at 9:30. Please sign up so I have an idea how many are coming. Even if you don't sign up please come. We're in the International Business Park just off I-85. Enterprise Dr is about in the middle of the park. My office is in the cul-de-sac next to Federal Express

4539 Enterprise Dr
Concord, NC

2012 Quilt Show

Cabarrus Quilters Guild

**Splash of Color Fiber Art and Quilt Show
2012**

Information and Updates

2012 Fiber Art and Quilt Show Update

Committee Chairperson – Renee Hoagland

You may not be aware of it – but the 2012 Quilt Show Committee has been making great headway in preparation for our show in October.

Terry has been very busy getting fliers and raffle tickets printed, advertising listed, the website updated and so much more. Take a look at our website to see the list of vendors that Will and Judy have been able to attain for our show. Many of those vendors have decided to help with sponsorships as well. To date we have 22 vendors committed to be at our show. Of the 68 booths that we have to sell, those vendors have purchased 52 of them! That is just a great deal of work! We still have 16 booths to sell so we would love to hear your suggestions! If you know of a vendor that you would like to have at our show, please tell Will and Judy about them. They will be happy to send them the contract and help them become part of our show. Candy is doing a great job collecting UFO's and

getting volunteers to finish them for our Silent Auction. I predict that this function of our show is going to be a big success for us again this year! Please continue to get Candy those UFO's and thank you to all of our volunteers who have offered to finish them! Marguerite and Ona are also collecting quilt related donations for our White Elephant Sale. Please take a few minutes to go through your stash and see what you might want to donate for this important booth at our show!

Our NQA membership is up to date and we have 5 guild members in good standing with their NQA membership. That means that we will be able to get our discounted insurance for the show. We will also carry an additional amount of insurance to ensure that all quilts are covered while in our care. The judges have also been selected for this year's show. We decided to ask Scott Murkin and Kathy Wiggins to judge our entries again this year. They did such a wonderful job last year, and I am sure they will do the same this year.

I know that some of you are concerned about the \$10 entry fee and the length of time between the quilt drop off and the time of pick up after the show. So let me try to address each issue. If you still have questions, please see me or Stephanie and we will be happy to answer any questions or concerns you might have.

\$10 Fee for Judged Quilts

Two years ago the guild voted to have our show be a judged show. However, it was decided that those members who wanted to have their quilts judged, would need to help pay for the cost of hiring the judges. So we decided that a one-time per show fee of \$10 would be charged to ONLY those members that wanted their quilts judged. You only need to pay the fee once in the given quilt show year, regardless of the number of quilts your entering to be judged. For those members that do not want their quilts judged, there will be NO CHARGE for entering your quilts. Please take a moment to read

the quilt show entry rules and let me know if you have any further questions.

Length of Time Between Drop off and Pick up

I know that 36 days between drop off and pick up seems like a lifetime to be parted from your precious quilts. However, as you all know, we are a small guild and many of our volunteers work full time jobs. Putting on and coordinating a show of this size takes a great deal of time and effort. This work needs to be done solely by those members that are generous enough to volunteer to help. In many cases they also need to balance day jobs, quilt show work and family time. This is not always easy to do but we made a serious effort to shorten the timeline as much as possible while still allowing enough time to get all the work done. It would be great if someday we are large enough to have a full time Quilt Show Committee, but until that time comes, we greatly appreciate your continued support and understanding.

Thank you

Renee Hoagland

IMPORTANT DATES:

August 13, 2012 – Entry Forms with Photos Due – see Stephanie Newbrough or Martha Jackson

Please feel free to start submitting your entry forms now. If you have questions regarding which category your quilt show be in, you are

welcome to bring it in and show it to either Stephanie, Martha or Renee and we will be happy to help you.

August 28m 2012 – Quilt Drop off – see Stephanie Newbrough or Martha Jackson

Drop Off Location: Poplar Grove Baptist Church - 3476 Poplar Tent Road - Concord, NC 28027

Between the Hours of 4:00 PM and 9:00 PM

September 8, 2012 – Show Judges Cathy Wiggins and Scott Murkin will judge submitted quilts

October 4, 2012 – Show Set Up at Cabarrus Arena Events Center

October 5, 2012 – Splash of Color Fiber Art and Quilt Show Day ONE

2012 Committee Chairpersons

The following are committee chairs for 2012. We still need volunteers. Please consider taking one of the **OPEN** positions. Advise Carol Harris as soon as possible.

Cabarrus Quilters Chairs for 2012

Newsletter/Membership List -

Tom Richardson

2012 Program Chair - Linda Brimanson

2012 Quilt Show - Renee Hoagland

Audit Commit 2012 - JoAnna Cupp

Juanita Williams

Community Outreach Chair- Debbie Robb

Webmaster - Terry Patterson

Historian - Phares Sechler

October 6, 2012 – Splash of Color Fiber Art and Quilt Show Day TWO and Show Take Down

Quilts can be picked up at 6:30 PM

Librarian - Marsha Haney

Humanitarian / Hospitality - Debbie Seatz

Sew Tuesday - Mildred Lamb

Sew Saturday - Carol Harris

Tabor Retreat - Lisa Edwards

BJ's Membership - Pat Stedwell

2012 Raffle Quilt - Merle Clifford & Marguerite Klaiber

2013 Raffle Quilt - Cathey Hooper

JoAnna Cupp

Carol Davis

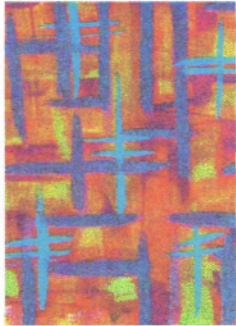
Carol Harris

Newsletter Advertisement Space:

Business card size \$7.00 per issue

Half page size \$15.00 per issue

Business card size is free for guild members.



The Quilters Station

Where Quilts Get Finished!

Rebecca Verrier-Watt

International Award Winning
Professional Long Arm Quilter

8401 Live Oak Road
Harrisburg, NC 28075

704-455-5236

thequiltersstation@yahoo.com
www.thequiltersstation.com

Patterns & Woolfelt

Vickie Clontz,
Designer



PO Box 1288
Rockwell, NC 28138
Phone: (704) 279-7714

Email:
annieskeepsakes@carolina.rr.com
Web-site:
www.annieskeepsakes.com



Dawn's Sewing & Embroidery

Fabrics, Notions, Alterations & Embroidery
Services, Sewing & Quilting Classes

810 Smith Street
Albemarle, NC 28001
704-985-3501
704-982-9681
www.dawnsfabrics.com

DAWN B. HOPKINS
Call for hours or appointment
hoppiealso@yahoo.com



8637 Concord Mills Blvd.
Concord, NC 28027
704-971-0351

Mon - Sat, 10-5
Tues & Thurs, 10-8

www.weresewcreative.com